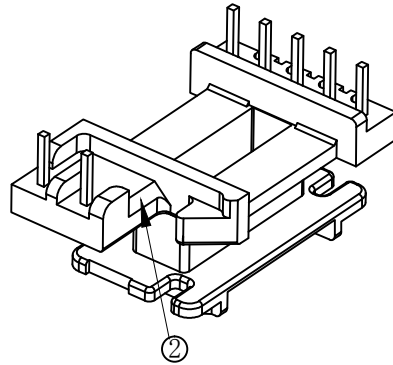
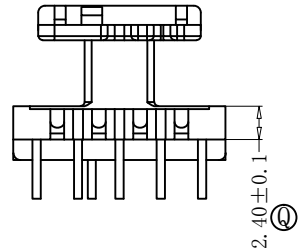
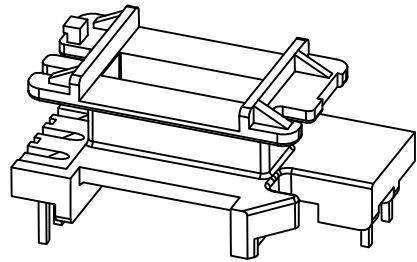
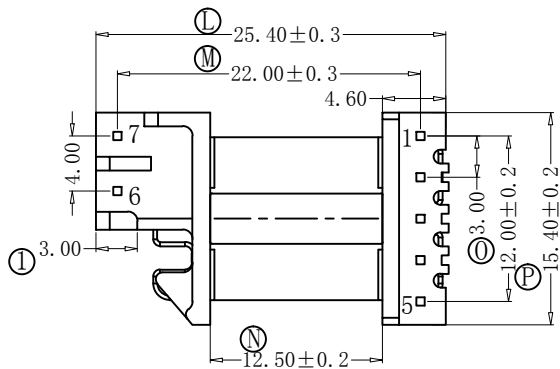
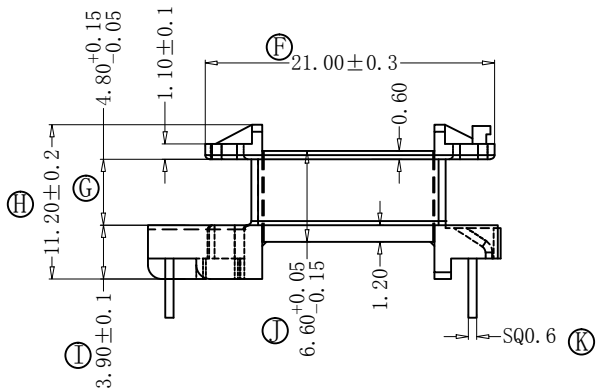
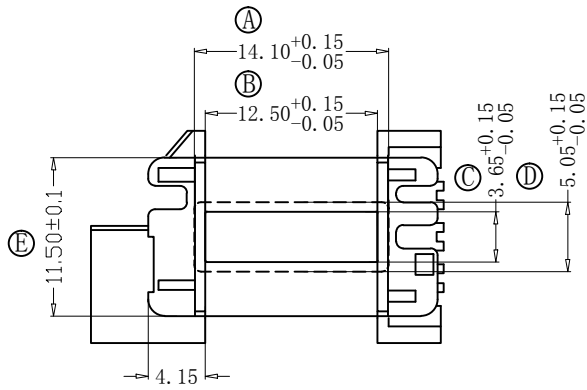


版本	A/1
----	-----

REV.	REVISIONS REC.	DATE
A/1	Ⓑ 尺寸由12.3改为12.5	2016.01.26
	Ⓔ 尺寸由11.7改为11.5	2016.01.26
A/2	① 尺寸由4.20改为3.00	2016.03.08
	② 处倒角C0.8	2016.03.08



注:未注R角为0.3.



深圳市搏思康电子有限公司

SHENZHEN BOSCOM ELECTRONICS CO.,LTD

ADDRESS

深圳市观澜街道石马径社区君新路
石三工业区146号

TELEPHONE

0755-28032969 28032970 28032971

FAX

0755-28032965

型号
MODER NAME

EE-15 (5+2P)

MATERIAL

PM-9820

SCALE

FIT

DRWING

08/03/2016

DESIGNED

APPROVED

产品编号
DRAWING NO

B-1514

PIN MATERIAL:
CP WIRE

符合ROHS/HP要求
符合UL94V-0标准

TOLERANCE

0<L≤4 ±0.10
4<L≤16 ±0.20 壁厚: ±0.10
16以上 ±0.30 PIN径: ±0.05