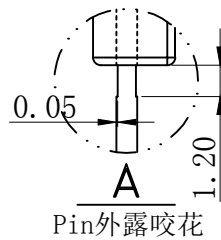
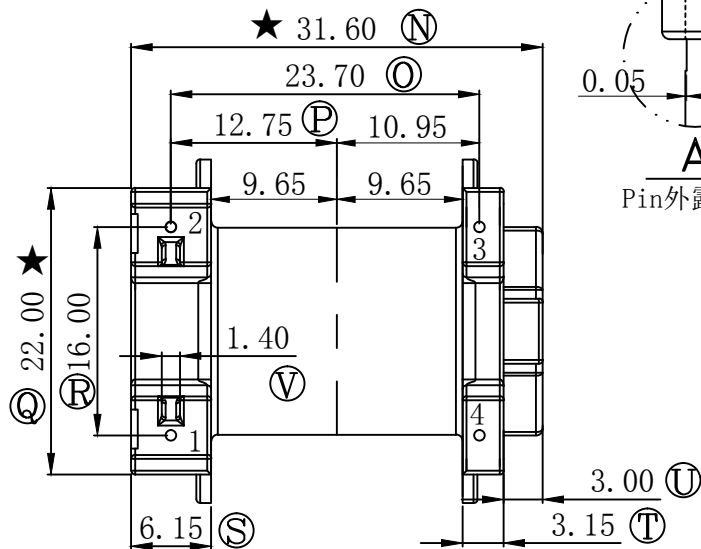
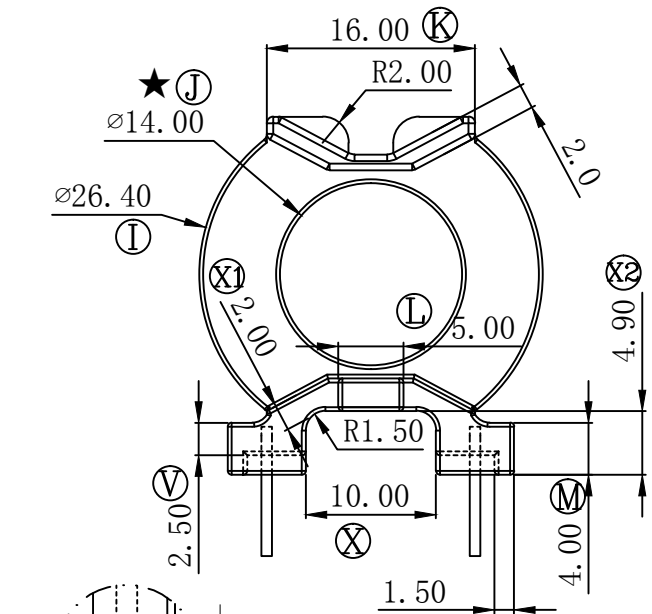
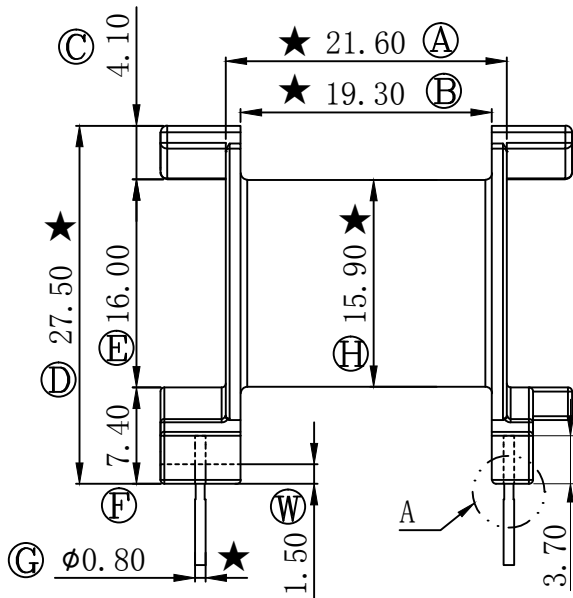
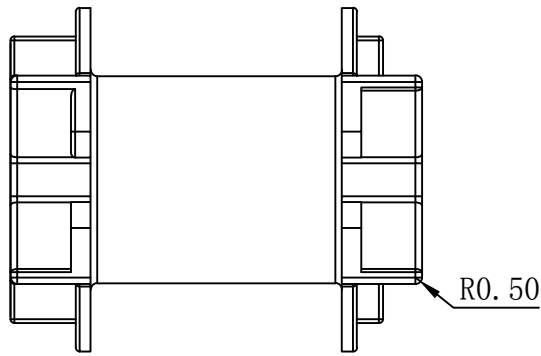
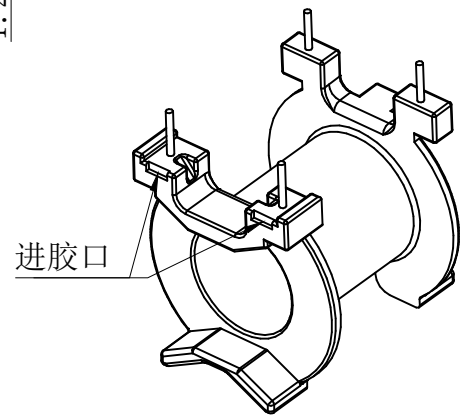


版本	A/0	REV	REVISIONS	REC	DATE
		A/0			



Pin外露咬花



注：“★”为重点尺寸,未注明R角为0.3.



深圳市搏思康电子有限公司  
SHENZHEN BOSCOM ELECTRONICS CO.,LTD

ADDRESS	深圳市观澜街道石马径社区君新路石三工业区146号
TELEPHONE	0755-28032969 28032970 28032971
FAX	0755-28032965

型号 MODEL NAME		产品编号 DRAWING NO	
PQ-32 (2+2P)		B-3217-4	
MATERIAL	PM-9630	PIN MATERIAL	CP WIRE
SCALE	FIT	TOLERANCE	
DRWING	11.12.2018	0 < L ≤ 4 ±0.10	壁厚: ±0.10 PIN径: ±0.05
DESIGNED	庄永委	4 < L ≤ 16 ±0.20	
APPROVED		16以上 ±0.30	