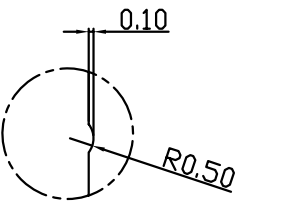
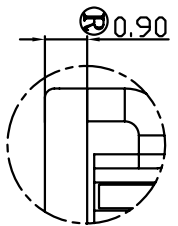


版本 A/2

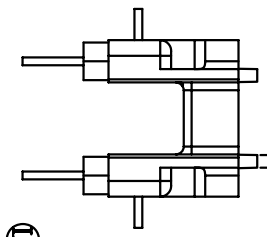
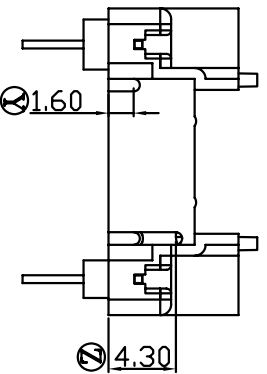
REV.	REVISIONS REC.	DATE
A/1	Ⓐ 0.70改为0.90 Ⓑ增加 $\phi 0.81 \times 1.20$ 凸台	2010.08.05 2010.08.05
A/2	Ⓑ 9.20±0.2改为9.20 ^{+0.1} Ⓒ 4.60±0.2改为4.40 ^{+0.1} Ⓓ 14.00±0.2改为14.00 ^{+0.1} 增加 Ⓔ 尺寸5.90 ^{+0.1}	2010.08.30 2010.08.30 2010.08.30 2010.08.30
	Ⓜ 2.00±0.2改为2.40 ^{+0.2}	2010.08.30



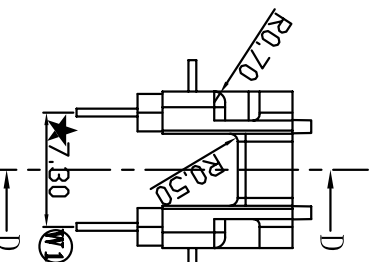
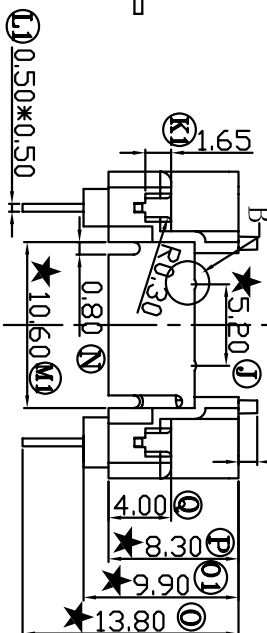
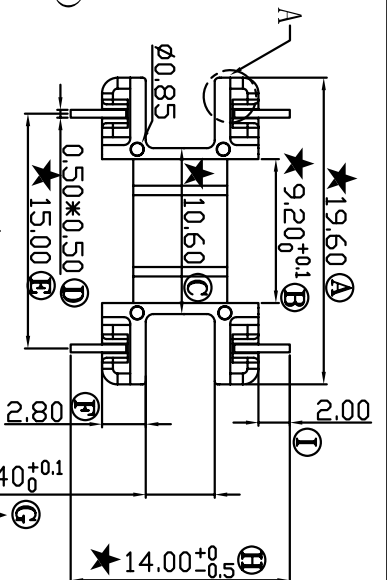
B部分放大 (3:1)



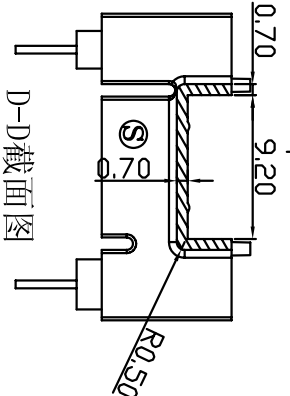
A部分放大 (3:1)



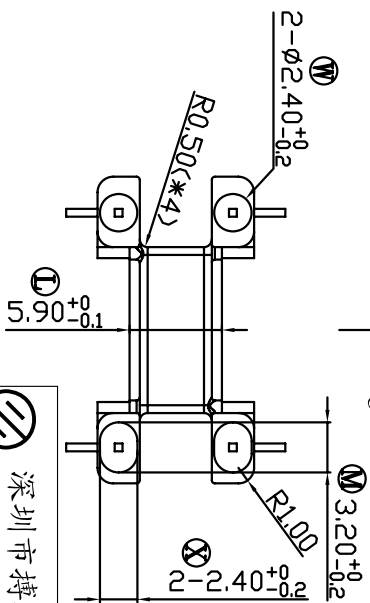
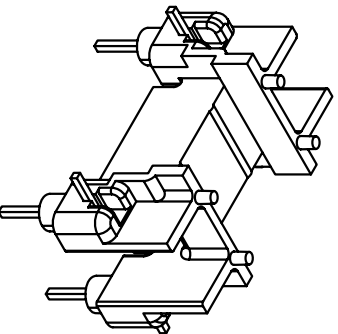
Ⓜ $\phi 0.81$



C-C截面图



D-D截面图



深圳市博思康电子有限公司
SHENZHEN BOSCOM ELECTRONICS CO.,LTD

型号 MODEL NAME
UI-16(2+2P)下盖

产品编号 DRAWING NO
B-1647

ADDRESS 深圳市观澜街道石马径社区君新路石三工业区146号

MATERIAL PBT-4130
SCALE FIT

PIN MATERIAL CP WIRE
TOLERANCE

TELEPHONE 0755-28032969 28032970 28032971
FAX 0755-28032965

DRWN BY ZHOU 11/11/09
DESIGNED 邹上峰
APPROVED 李德永

0.0/4 ±0.10
4≤L≤16 ±0.20
16>L ±0.30
壁厚: ±0.10
PIN#: ±0.05

注：“★”为重点尺寸,未注R角为0.3