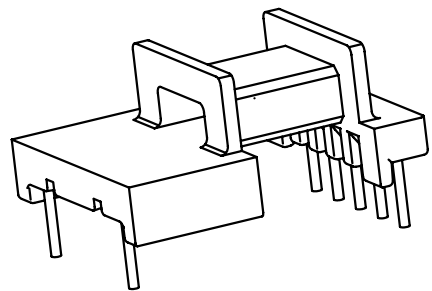
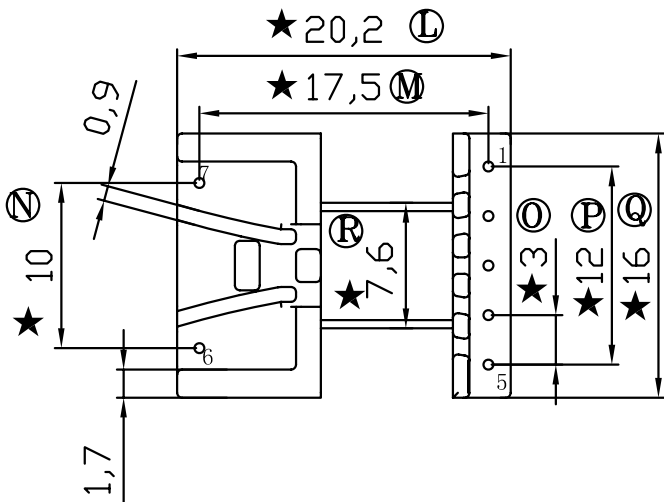
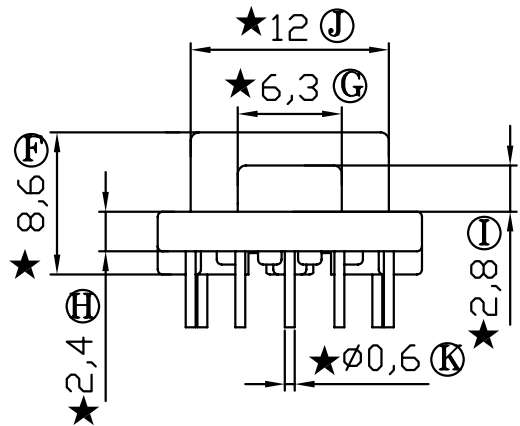
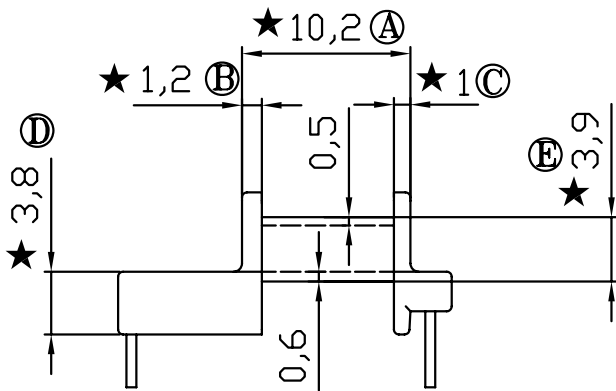
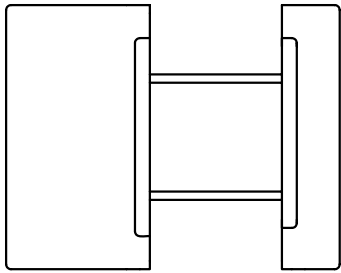


版本	A/1
----	-----

REV	REVISIONS REC	DATE
A/1	Ⓐ 9.8改为10.2	2011.11.23
	Ⓑ 0.9改为1.2	2011.11.23
	Ⓒ 0.9改为1.0	2011.11.23
	Ⓔ 3.6改为3.9	2011.11.23
	Ⓙ 2.6改为2.8	2011.11.23
	中间支点改为平齐底面	2011.11.23



注：“★”为重点尺寸，未注R角为0.3



深圳市搏思康电子有限公司  
SHENZHEN BOSCOM ELECTRONICS CO.,LTD

型号  
MODEL NAME

EFD-16 (2+5P)

产品编号  
DRAWING NO

B-1660

ADDRESS

深圳市观澜街道石马径社区君新路  
石三工业区146号

MATERIAL

PM-9820

PIN  
MATERIAL

CP WIRE

SCALE

FIT

TOLERANCE

TELEPHONE

0755-28032969 28032970 28032971

DRWING

ZOU 24/10/2011

DESIGNED

邹上峰

0<L<4 ±0.10 壁厚: ±0.10  
4≤L≤16 ±0.20 PIN径: ±0.05  
16以上 ±0.30

FAX

0755-28032965

APPROVED

李德永