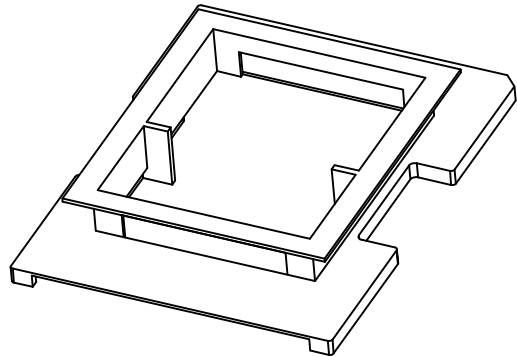
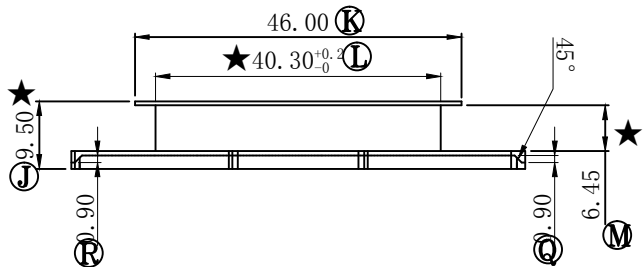
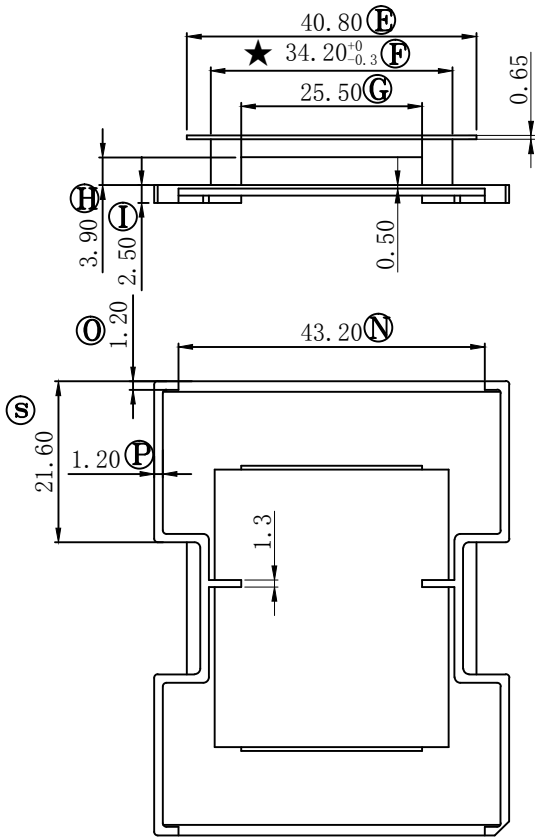
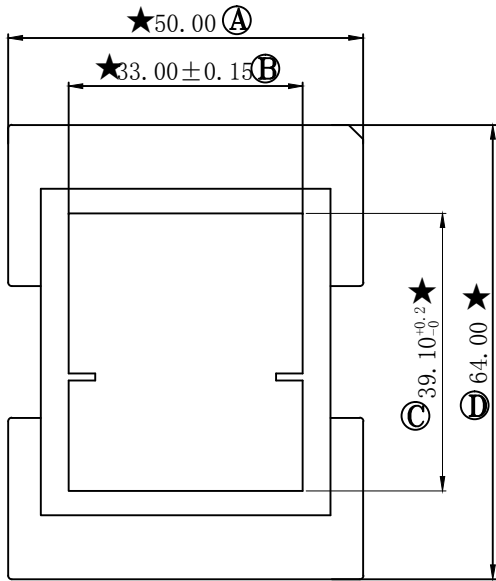


REV	REVISIONS REC	DATE
A1	新增④⑤两条加强筋条	2016.11.08



注：“★”为重点尺寸, 未注R角为0.3



深圳市搏思康电子有限公司
SHENZHEN BOSCOM ELECTRONICS CO.,LTD

ADDRESS	深圳市观澜街道石马径社区君新路 石三工业区146号
TELEPHONE	0755-28032969 28032970 28032971
FAX	0755-28032965

型 号 MODEL NAME		产品编号 DRAWING NO	
EFD-50外壳		B-5005-1	
MATERIAL	LCP	PIN MATERIAL	NO PIN
SCALE	FIT	TOLERANCE	
DRWING	2018.08.15	0<L≤16 ±0.20 壁厚: ±0.10	
DESIGNED	邹上峰	16以上 ±0.30 PIN径: ±0.05	
APPROVED	李德永		