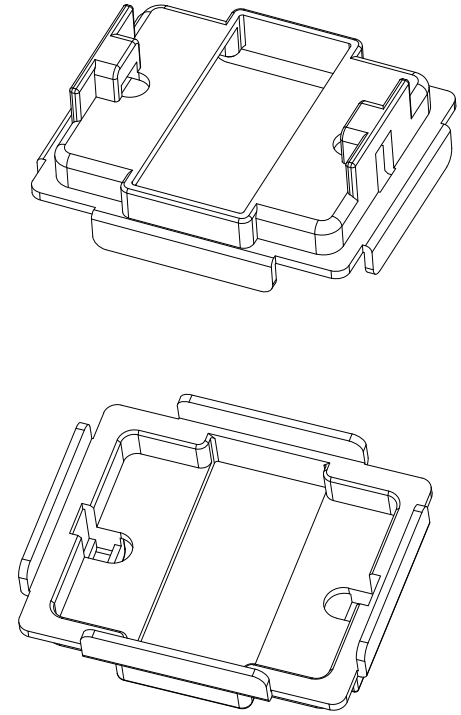
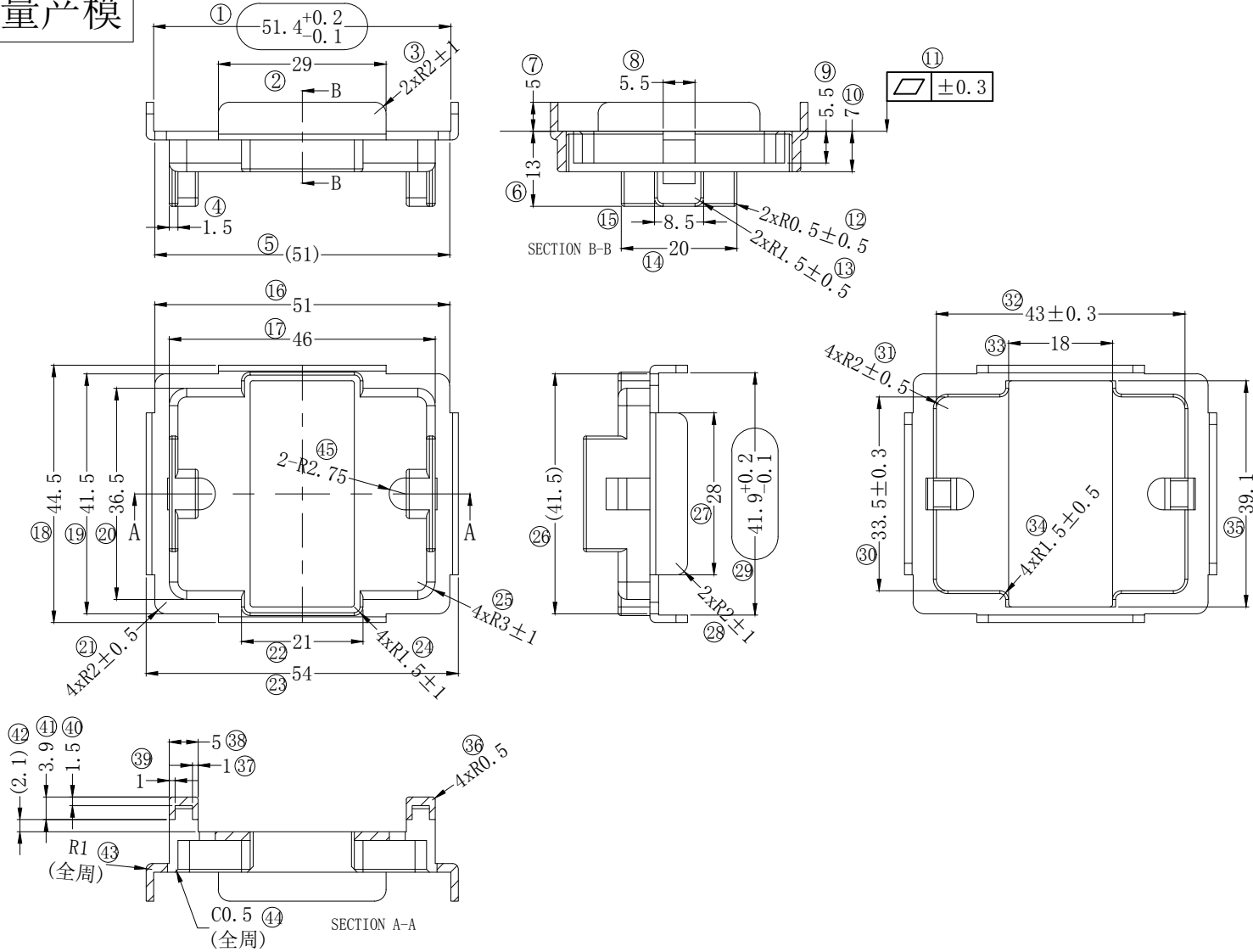


量产模



- 注(notes)
1. 不应该有裂缝或缺口
(There should be no cracks or chips.)
 2. 毛刺高度应为0.2mm或更小。
(The height of a barr is 0.2mm or less.)
 3. 为重要尺寸, 每次必检
(measure part shows an important management measure. It must be inspected every time.)
金属模具完成后, 请务必测量此部分。
(When a metallic mold is completed, please be sure to measure this portion.)
 4. 未标注的圆角为R0.2~0.5
(R without specification shall be 0.2~0.5mm.)
 5. 未指示的拔模角度0.5°±0.25°。
(The slope without directions shall be 0.5°±0.25°degree.)
 6. 再生材不得超过25%
(The usage rate of a reworked material is 25% or less.)
 7. 不允许使用脱模剂。
(Do not use mold release agents.)
 8. 本部件受内部规定“零部件成型品外观标准”(ST-S1-00085)的II类约束。
(This part is subject to Class II of our internal regulations "Component Molded Product Appearance Standards" (ST-S1-00085).)
 9. 有关没有说明的形状, 请参阅 3D-DATA。
(For shapes without instructions, refer to 3D-DATA.)

客户料号: C-B6-00385A

深圳市搏思康电子有限公司 SHENZHEN BOSCOM ELECTRONICS CO., LTD		型号 MODEL NAME	产品编号 DRAWING NO	
ADDRESS: 深圳市龙华区观澜街道牛湖社区君新路164号		TOP CASE	B-B239	
TELEPHONE: 0755-29673660 29673519			MATERIAL	PIN
广东搏思远科技有限公司 Guangdong Bosyuan Technology Co., Ltd		SCALE	TOLERANCE	
ADDRESS: 河源市高新区富民工业园A区联体厂房A栋南栋		DRWING	0<L≤4 ±0.10	
TELEPHONE: 0762-2820657 2820658 2820659 2820660		DESIGNED	4<L≤20 ±0.20	
		APPROVED	20<L≤50 ±0.30	
			50<L≤200 ±0.40	